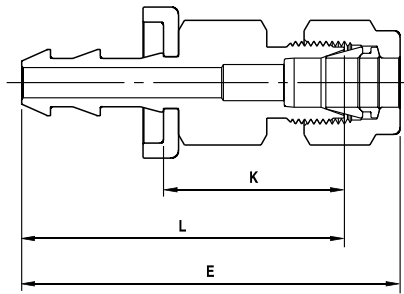
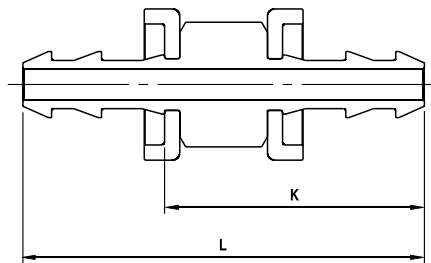


**130 LHPO  
LET-LOK® TUBE FITTINGS**



Ordering Information	A Tube O.D.	Hose I.D.	E		K		L	
			inch	mm	inch	mm	inch	mm
130LHPO _ 1/4 X 1/4	1/4	1/4	1.97	50.00	0.95	24.00	1.68	42.65
130LHPO _ 3/8 X 3/8	3/8	3/8	2.11	53.60	0.97	24.60	1.82	46.25
130LHPO _ 1/2 X 1/2	1/2	1/2	2.47	62.70	1.05	26.70	2.07	52.55

**132 PO  
UNIONS**



Ordering Information	Hose I.D.	Hose I.D.	L		K	
			inch	mm	inch	mm
132PO _ 1/4 X 1/4	1/4	1/4	2.07	52.60	1.33	33.90
132PO _ 3/8 X 3/8	3/8	3/8	2.25	57.20	1.40	35.50
132PO _ 1/2 X 1/2	1/2	1/2	2.61	66.30	1.59	40.40
132PO _ 3/4 X 3/4	3/4	3/4	3.83	97.30	2.18	55.60

**ASSEMBLY INSTRUCTIONS**

- Cut a square edge with a hose cutter.
- Push **HOSE-END™** into end connection.
- Continue pushing until **HOSE-END™** reaches plastic cap.

Diagram illustrating the assembly steps: 1. Cutting the hose end square. 2. Pushing the HOSE-END connector into the hose. 3. Pushing the connector until it reaches the plastic cap.

**DISASSEMBLY INSTRUCTIONS**

- Slit **HOSE-END™** as described.
- Bend and pull hose out from **HOSE-END™** connector.

Diagram illustrating the disassembly steps: 1. Slitting the HOSE-END connector with a red-handled tool. 2. Bending and pulling the hose out from the connector.